



More than Muffins

Shifting the Parent Involvement
Paradigm

The Paradigm

1.) We think that we must serve food as the draw to get parent participation.



The Paradigm (continued)

2.) Success equals large turn out



The Paradigm (continued)

3.) Must please and meet the needs of all the people, simultaneously.



True Intent of Title I Parental Involvement

“In a schoolwide program, *all parents* of children who attend the school are eligible to participate in parental involvement activities. However, given that the focus of a schoolwide program is to raise the achievement of the lowest-achieving students, ...

Georgia Department of Education
Dr. John D. Barge, State Superintendent
June 2011 Page 47 of 381
All Rights Reserved

...a schoolwide program should make a concerted effort to ensure that its parental involvement activities include the parents of the lowest-achieving students in order that they may better assist in the education of the child (US ED, 2004)”

Georgia Department of Education
Dr. John D. Barge, State Superintendent

June 2011 Page 47 of 381

All Rights Reserved

“A schoolwide program must include among its components various strategies to increase parental involvement in accordance with section 1118 of ESEA, such as family literacy services.”

Agreeable with Compliance Expectations

- Parent Involvement Policy Checklist
- Parent Involvement Plan
- Monitoring requirements
- Compact Checklist
- Results of Parent Surveys/Evaluations

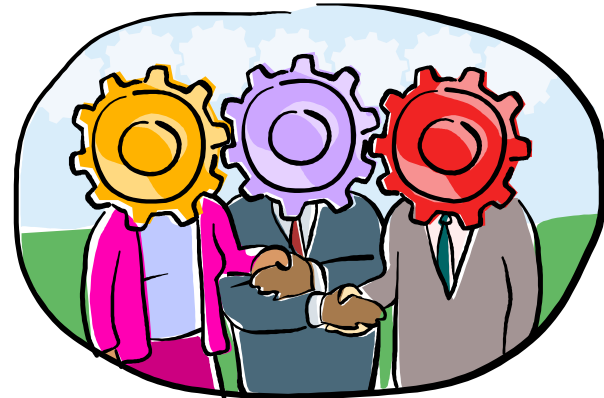
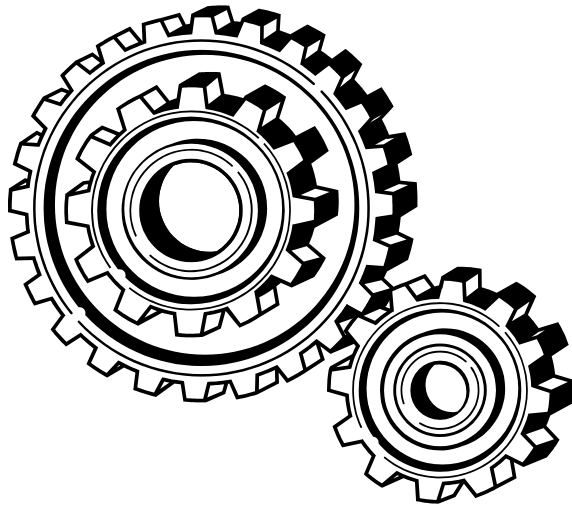
Parent Involvement Monitoring Requirements and Policy Checklist

3.10 – build parents' capacity...

- Provide assistance to parents ... how to work with educators to improve the achievement of their children
- Provide materials and training to help parents to work with their children to improve their children's achievement, such as literacy training , and using technology, as appropriate, to foster parental involvement

Don't Recreate the Wheel

- If the 45 Day action plan focuses on third grade math or sixth grade reading comprehension – then list one or more strategies that focus on including the parents in all the plans.



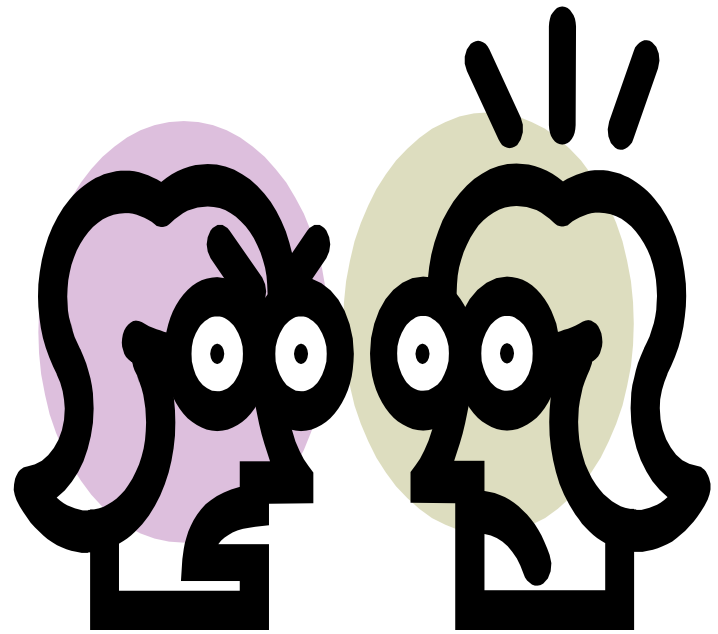
Include “Parent” Strategies In All Plans

- Schoolwide Plan
- 45 Day Action Plan
- Parent Involvement Plan

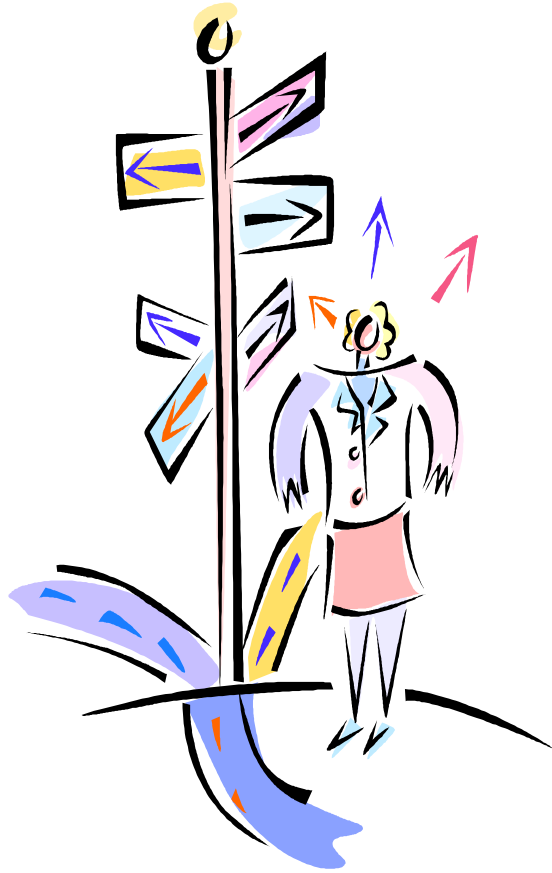


Beginning the “Shift”

- “*But we’ve always done it THIS WAY!*”
- “*Oh, we are doing that!*”
- “*It’s just not IN the plan.*”



Decide on the goal...

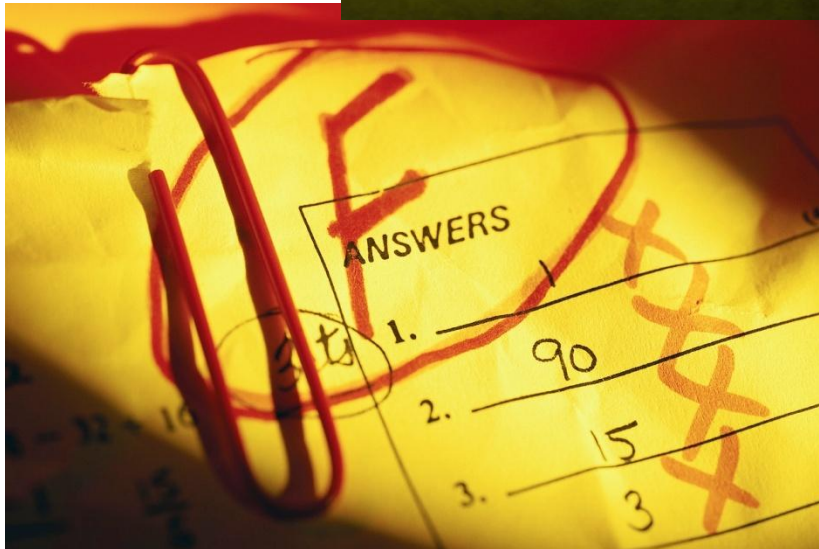


...to focus on
including parents
of lowest
achieving students.

Scores? Subject? Grade?



- What is already in your plan?
- What can be added to include parents?



More than Meals – Shifting the Parental Involvement Paradigm

WORKSHEET

*Empower parents with the resources to support their child's
achievement.*

Subject/Topic: _____

RESOURCES

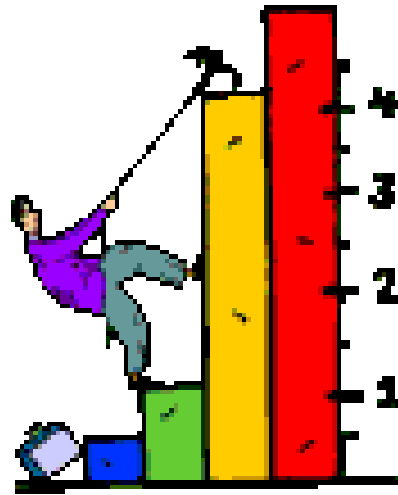
**WAYS TO
EMPOWER**

RESULTS

TIMING

Involve Parents

- Arrange for 1:1 or small group training sessions
- Teachers refer specific parents to group(s) according to student's needs
- Provide resources and support as needed
- Establish expectations
- Measure Student Progress



Get full credit for all you are doing!



- Include the efforts of all members of the team to serve parents – not just those of Parent Involvement Coordinators.

What do we know?

- Scores
- Observations
- Parents
- The Law
- Offer Help to Parents
- Model the practice
- Survey Parent Opinion
- Document Actions

*...and offer light refreshments,
as appropriate!*



More than Meals – Shifting the Parental Involvement Paradigm

WORKSHEET

*Empower parents with the resources to support their child's
achievement.*

Subject/Topic: 3rd Grade Fluency

RESOURCES

WAYS TO
EMPOWER

RESULTS

TIMING

More than Meals – Shifting the Parental Involvement Paradigm

WORKSHEET

*Empower parents with the resources to support their child's
achievement.*

Subject/Topic: Percent/Decimals/Fractions

RESOURCES

**WAYS TO
EMPOWER**

RESULTS

TIMING

Marihelen Newman
Glynn County School System

Title I

District Family Involvement Specialist

(912) 267-4100 ext. 1545

mnewman@glynn.k12.ga.us

